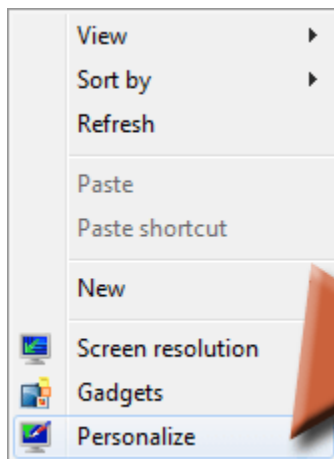
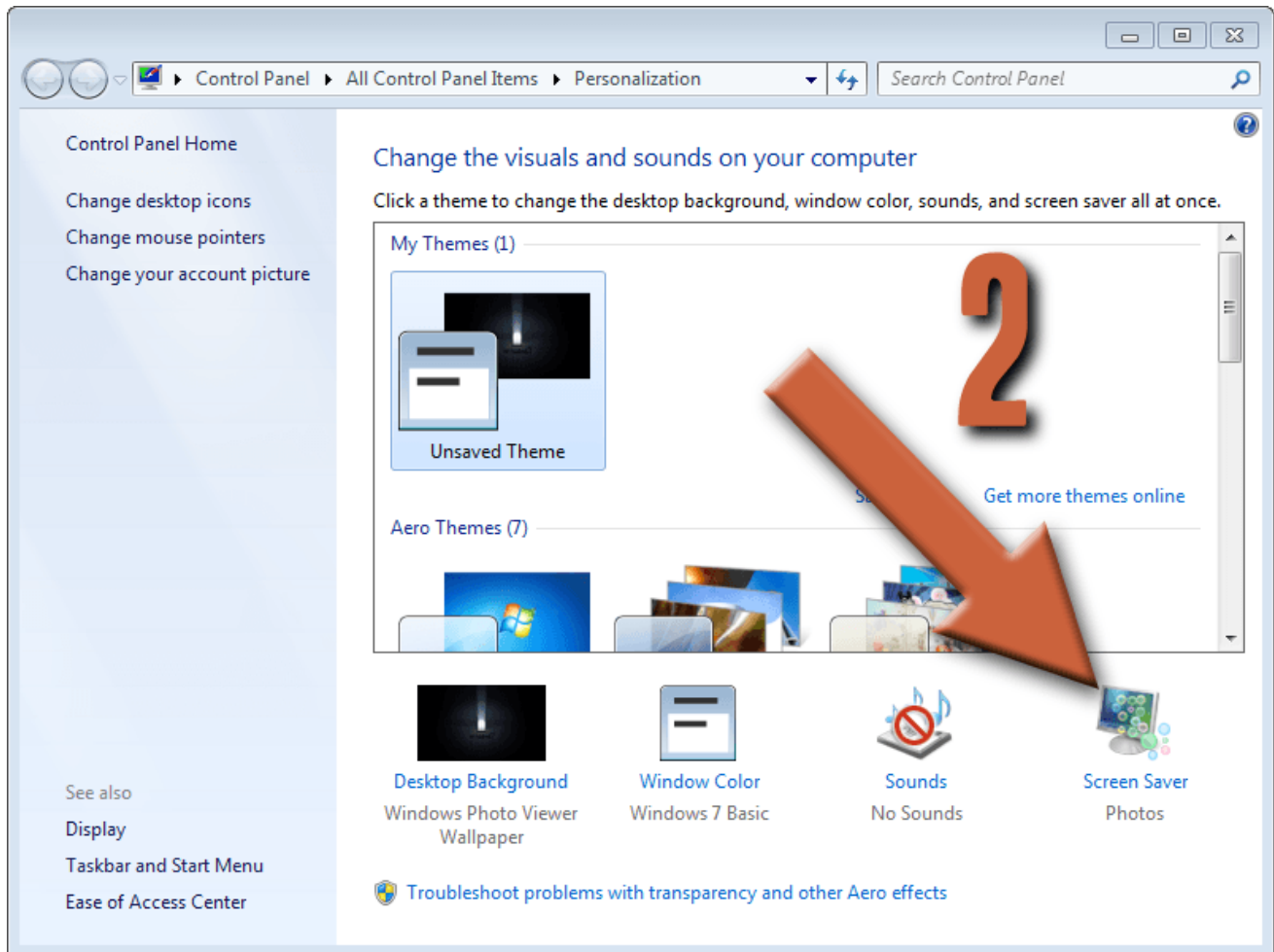


How to Set Your Screen to Lock in Windows 7

1. **Right click** anywhere on the desktop and select **Personalize** from the menu
2. Select **Screen Saver**
3. Make sure you have a screen saver selected – it doesn't matter which one
4. Check the box that says **On resume, display logon screen**
5. Enter the number of minutes to wait before the screen saver activates
6. Click **OK**



Integrated Network Systems, Ltd
1900 Fairgrove Ave, Suite 164
Hamilton, OH 45011
PH: 513.348.5554
FX: 513.826.4365
6/25/2015



Integrated Network Systems, Ltd
1900 Fairgrove Ave, Suite 164
Hamilton, OH 45011
PH: 513.348.5554
FX: 513.826.4365
6/25/2015

