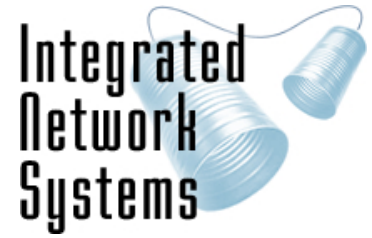


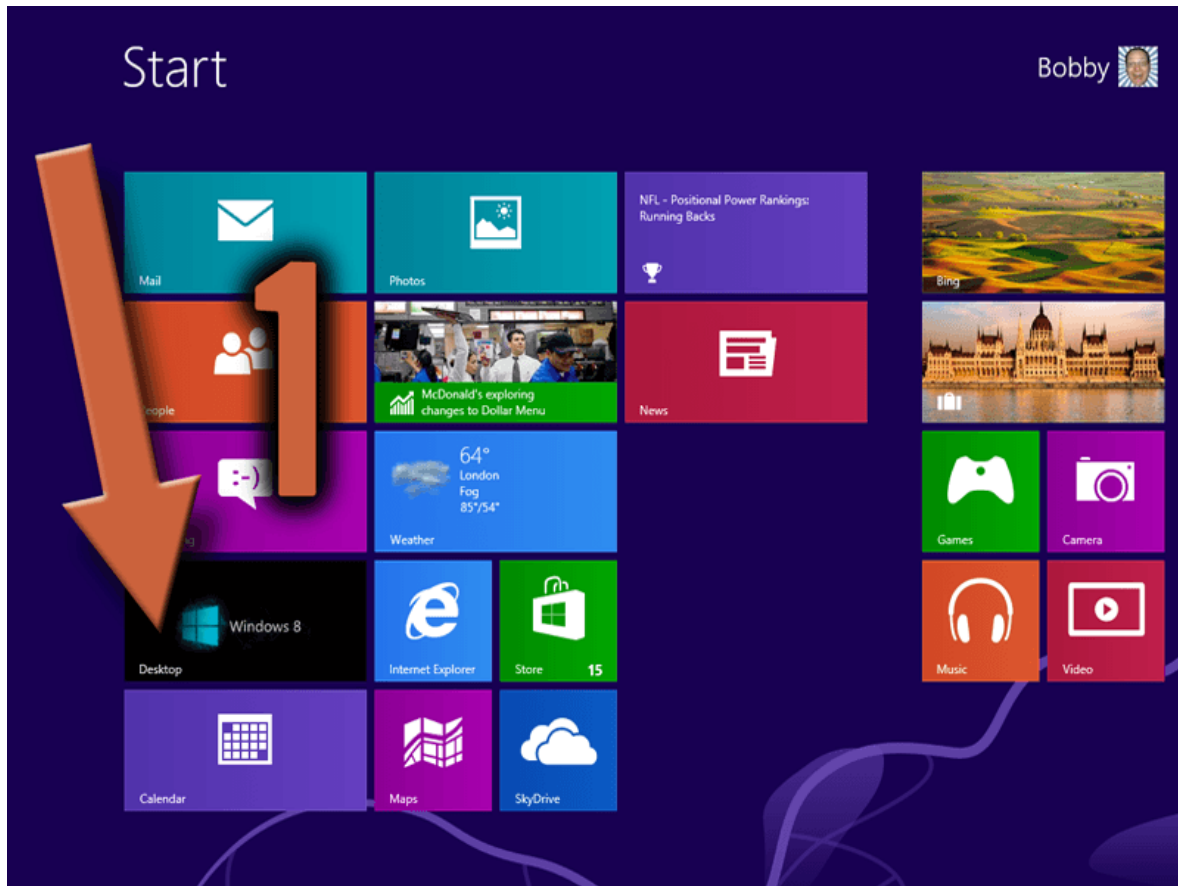
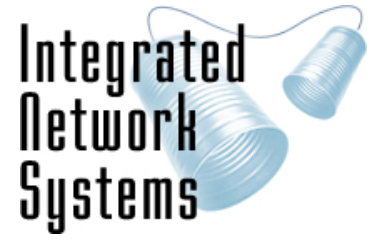
Integrated Network Systems, Ltd
1900 Fairgrove Ave, Suite 164
Hamilton, OH 45011
PH: 513.348.5554
FX: 513.826.4365
6/25/2015



How to Set Your Screen to Lock in Windows 8

1. Go to your desktop if you're not already
2. Move the mouse to the bottom right corner until the charms menu appears
3. Click on **Settings**
4. Select **Personalization**
5. Select **Screen Saver**
6. Make sure you have a screen saver selected – it does not matter which one
7. Check the box that says **On resume, display logon screen**
8. Enter the number of minutes to wait before the screen saver activates
9. Click **OK**

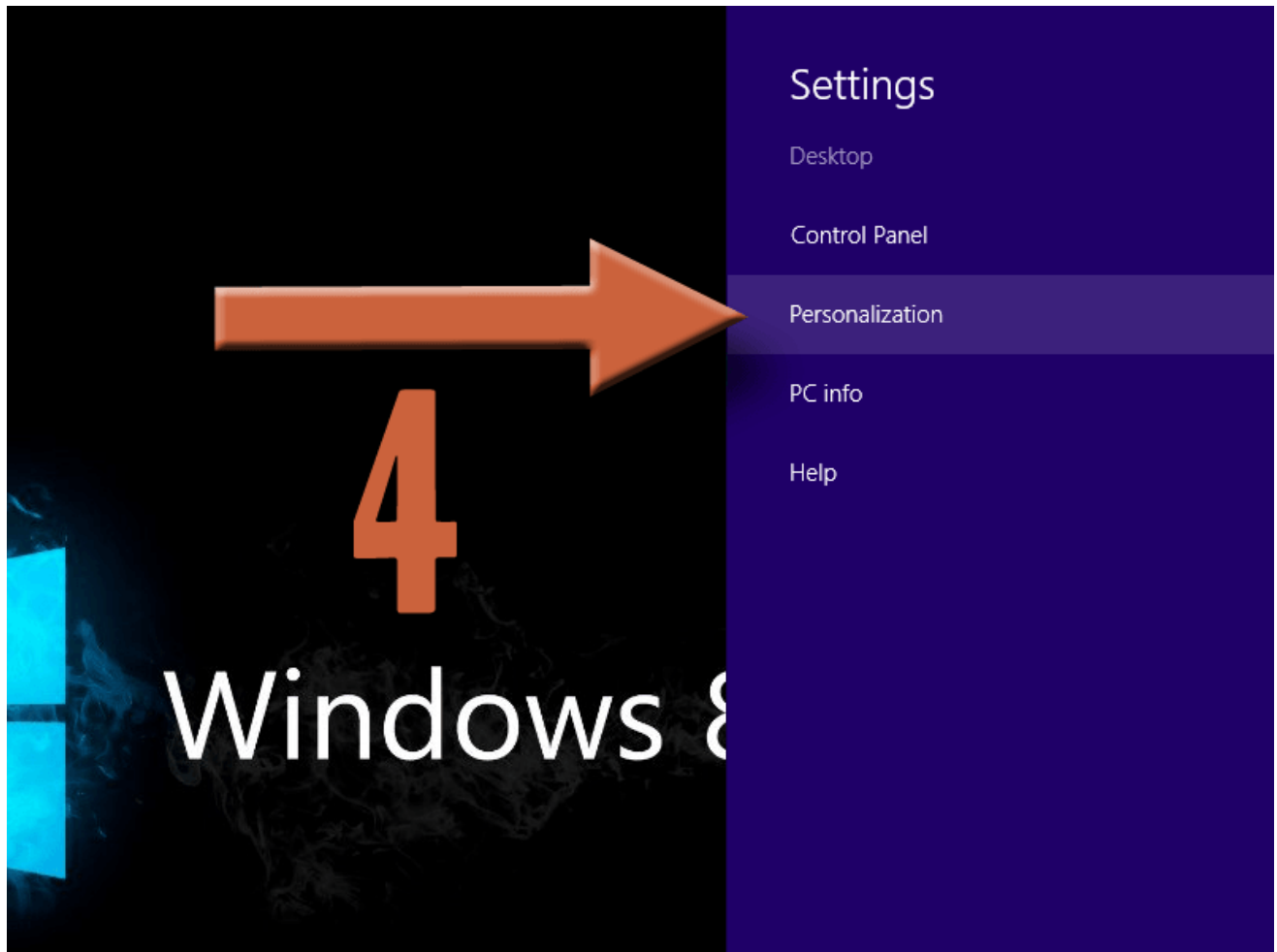
Integrated Network Systems, Ltd
1900 Fairgrove Ave, Suite 164
Hamilton, OH 45011
PH: 513.348.5554
FX: 513.826.4365
6/25/2015



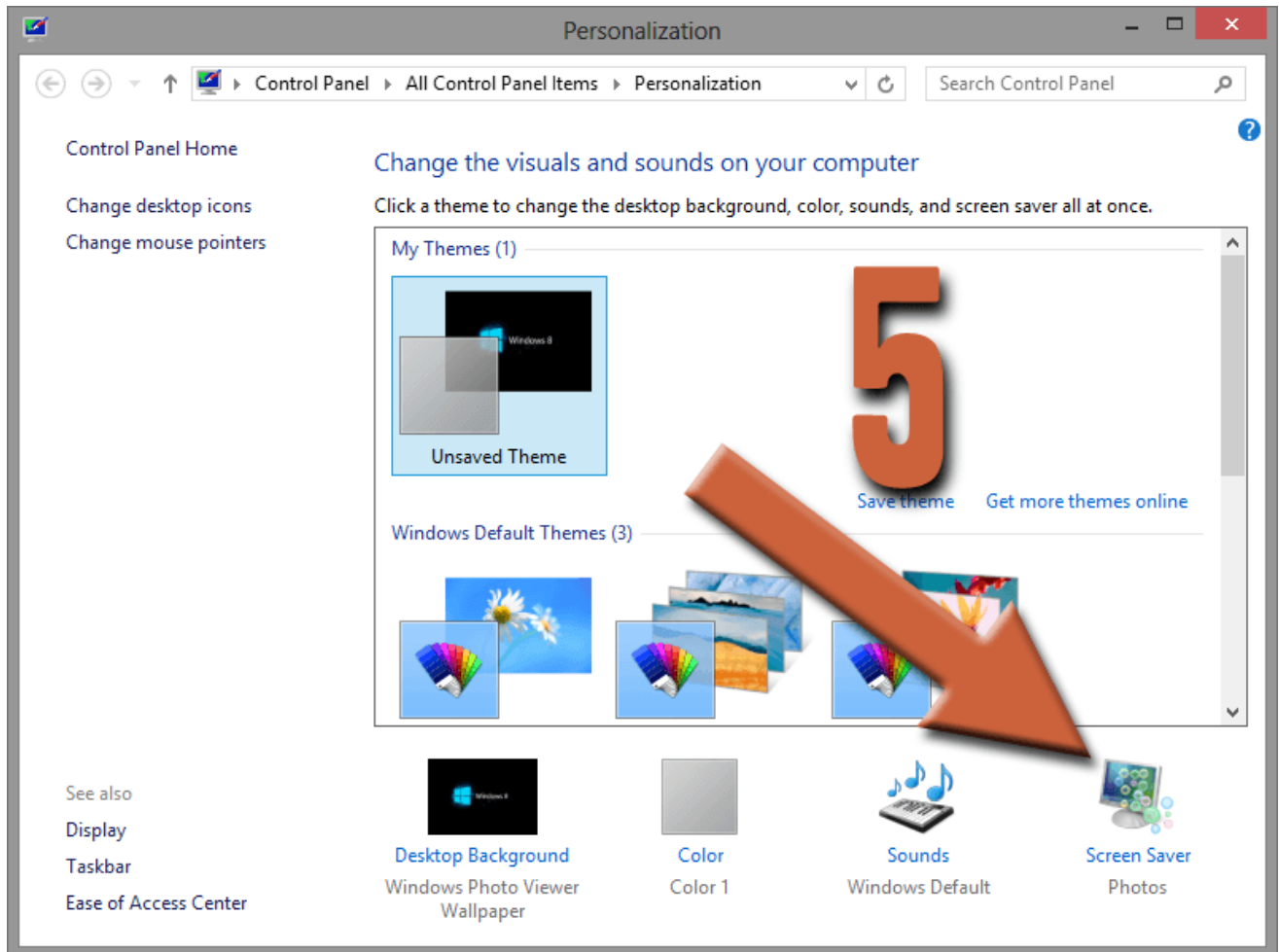
Integrated Network Systems, Ltd
1900 Fairgrove Ave, Suite 164
Hamilton, OH 45011
PH: 513.348.5554
FX: 513.826.4365
6/25/2015



Integrated Network Systems, Ltd
1900 Fairgrove Ave, Suite 164
Hamilton, OH 45011
PH: 513.348.5554
FX: 513.826.4365
6/25/2015



Integrated Network Systems, Ltd
1900 Fairgrove Ave, Suite 164
Hamilton, OH 45011
PH: 513.348.5554
FX: 513.826.4365
6/25/2015



Integrated Network Systems, Ltd
1900 Fairgrove Ave, Suite 164
Hamilton, OH 45011
PH: 513.348.5554
FX: 513.826.4365
6/25/2015

